

# TRACT No. 3426

IN UNINCORPORATED TERRITORY OF KERN COUNTY  
STATE OF CALIFORNIA

BEING A SUBDIVISION OF PORTIONS OF SECTIONS 35 & 36, T.12 N.  
R.16 W., AND PORTIONS OF SECTIONS 1, 2 AND 11, T.11 N. R.16 W.,  
S.B.B. & M., IN THE COUNTY OF KERN, STATE OF CALIFORNIA.

Accepted for record and filed in Book 23  
of Maps, Page 145 in the Office of the County  
Recorder of the County of Kern, this 17th day  
of May 1972 at 8:00 a.m.

Ray A. Vercaemen  
County Recorder of the County of Kern  
by: Freal W. Harvey  
Ass't. Recorder

### ENGINEER'S CERTIFICATE

I HEREBY CERTIFY THAT I AM A REGISTERED CIVIL ENGINEER OF THE STATE OF CALIFORNIA THAT THIS MAP CONSISTING OF NINETEEN SHEETS CORRECTLY REPRESENTS A SURVEY MADE UNDER MY SUPERVISION DURING APRIL 1971; THAT SUCH SURVEY IS TRUE AND COMPLETE AND ALL MONUMENTS SHOWN THEREON ACTUALLY EXISTS AND OF A CHARACTER AND DO OCCUPY THE POSITIONS INDICATED AND SUFFICIENT TO ENABLE THE SURVEY TO BE RETRACED EXCEPT THE MONUMENTS OF LOT CORNERS ARE NOT YET SET, THAT THEY WILL BE SET IN THE POSITIONS INDICATED THEREON WITHIN ONE YEAR FROM DATE OF RECORDATION OF SAID MAP.

DATE: 3/31/1972

Charles Schaser  
MARTIN PETKASEK R.C.E. 16586  
VERPET ENGINEERING COMPANY

### OWNER'S CERTIFICATE

WE HEREBY CERTIFY THAT WE ARE THE OWNERS OF OR HAVE SOME RIGHT TITLE OR INTEREST IN AND TO THE REAL PROPERTY, INCLUDED WITHIN THE SUBDIVISION SHOWN UPON THIS MAP, AND EXCEPT AS SHOWN ON THIS MAP AND CERTIFICATES MADE A PART HEREOF, WE ARE THE ONLY PERSONS WHOSE CONSENT IS NECESSARY TO PASS A CLEAR TITLE TO SAID PROPERTY AND WE CONSENT TO THE MAKING OF SAID MAP AND SUBDIVISION AS SHOWN WITHIN THE COLORED BORDERLINES.

AND, WE HEREBY DEDICATED TO PUBLIC USE ALL OF CHALET DRIVE FOR STREET PURPOSES.

WE ALSO HEREBY DEDICATE TO THE COUNTY OF KERN, SLOPE EASEMENTS AS SHOWN UPON SAID MAP ADJACENT TO THE DEDICATED RIGHT OF WAY OF CHALET DRIVE, WITH THE PRIVILEGE AND RIGHT TO EXTEND AND MAINTAIN DRAINAGE STRUCTURES, EXCAVATION SLOPES AND EMBANKMENT SLOPES WITHIN SAID SLOPE EASEMENTS, INCLUDED WITHIN THE BOUNDARIES OF THIS TRACT, SAID RIGHTS SHALL BE SUPERIOR TO THE RIGHT OF THE GRANTORS AND THEIR HEIRS AND ASSIGNS TO LATERAL SUPPORT; SUCH EASEMENTS TO BE KEPT OPEN AND FREE FROM BUILDINGS AND STRUCTURES OF ANY KIND. ALSO THE NON DEDICATED STREETS ON THIS MAP ARE NOT OFFERED FOR DEDICATION AND ARE INTENDED FOR THE USE OF LOT OWNERS IN THE SUBDIVISION, THEIR LICENSEES, VISITORS, TENANTS AND SERVANTS, AND ADJACENT PROPERTY OWNERS. THE USE OF SAID STREETS BY THE PUBLIC SHALL BE PERMITTED. THE NON DEDICATED STREETS SHOWN ON THIS MAP ARE NOT INTENDED TO BE CONSTRUCTED OR ACCEPTED FOR MAINTENANCE PURPOSES BY THE COUNTY OF KERN. THE OWNERSHIP OF THE LAND WHICH IS SUBJECT TO NON DEDICATED STREETS VESTED IN THE NAME OF "3424 PROPERTY OWNERS ASSOCIATION INC." WHICH IS CHARGED WITH THE RESPONSIBILITY OF MAINTAINANCE OF SAID NON DEDICATED STREETS AS SET FORTH IN SECTION 5838. SAID "3424 PROPERTY OWNERS ASSOCIATION INC." SHALL GRANT ALL LOT OWNERS IN THE SUBDIVISION THE RIGHT OF INGRESS AND EGRESS OVER SAID NON DEDICATED STREETS. GRANTING OF SAID EASEMENT SHALL INCLUDE THE PROVISION THAT SAID EASEMENT IS "FOR USE IN COMMON WITH OTHERS." ALSO, THOSE CERTAIN EASEMENTS DESIGNATED AS DRAINAGE EASEMENTS A, B, C, D, E, F, G, H, I, J, K, L, M, N, O, P, Q, R, S, T, U, AND V, WATER TANK EASEMENTS AND FUEL BREAK EASEMENTS FOR FIRE SUPPRESSION PURPOSES, SEWER EASEMENTS, SLOPE EASEMENTS (EXCEPT THOSE SLOPE EASEMENTS ADJACENT TO CHALET DRIVE) SHALL BE VESTED IN THE NAME OF "3424 PROPERTY OWNERS ASSOCIATION INC." SAID DRAINAGE EASEMENTS, FUEL BREAK EASEMENTS AND SLOPE EASEMENTS TO BE KEPT OPEN AND FREE FROM BUILDINGS AND STRUCTURES OF ANY KIND. SAID FUEL BREAK EASEMENTS AND FIRE SUPPRESSION ITEMS SHALL BE MAINTAINED WITH WATER TANKS AT THEIR CAPACITY BY SAID "3424 PROPERTY OWNERS ASSOCIATION INC." TITLE TO SLOPE EASEMENTS LYING ADJACENT TO NON DEDICATED STREETS AS SHOWN ON THIS MAP SHALL BE VESTED IN SAID "3424 PROPERTY OWNERS ASSOCIATION INC." TOGETHER WITH THE PRIVILEGE AND RIGHT TO EXTEND AND MAINTAIN DRAINAGE STRUCTURES EXCAVATION SLOPES, AND EMBANKMENT SLOPES WITHIN SAID SLOPE EASEMENTS. SAID RIGHTS SHALL BE SUPERIOR TO THE RIGHTS OF THE LOT OWNERS AND THEIR HEIRS AND ASSIGNS TO LATERAL SUPPORT, LOT 197, OPEN AREA PRESERVE, LOT 17, OPEN AREA PRESERVE, AND EQUESTRIAN EASEMENTS AS SHOWN UPON SAID MAP, SHALL BE VESTED IN SAID "3424 PROPERTY OWNERS ASSOCIATION INC." IN PERPETUITY.

### OWNER

THE BANK OF CALIFORNIA NATIONAL ASSOCIATION, A NATIONAL BANKING ASSOCIATION, AS TRUSTEE

H.R. Billings  
TRUST OFFICER  
H.R. BILLINGS

C.J. Featherston  
ASST. TRUST OFFICER  
C.J. FEATHERSTON

STATE OF CALIFORNIA }  
COUNTY OF LOS ANGELES } SS

ON THIS 14th DAY OF MARCH 1972 BEFORE ME LARINE W. JACKSON A NOTARY PUBLIC IN AND FOR SAID COUNTY AND STATE PERSONALLY APPEARED H.R. BILLINGS KNOWN TO ME TO BE THE TRUST OFFICER AND C.J. FEATHERSTON KNOWN TO ME TO BE THE ASST. TRUST OFFICER OF THE BANK OF CALIFORNIA NATIONAL ASSOCIATION THE CORPORATION THAT EXECUTED THE WITHIN INSTRUMENT AND KNOWN TO ME TO BE THE PERSONS WHO EXECUTED THE WITHIN INSTRUMENT ON BEHALF OF THE CORPORATION THEREIN NAMED AND ACKNOWLEDGED TO ME THAT SAID CORPORATION EXECUTED THE SAME

Laraine W. Jackson  
NOTARY PUBLIC  
OFFICIAL SEAL  
LARAIN W. JACKSON  
NOTARY PUBLIC - CALIFORNIA  
PRINCIPAL OFFICE IN  
LOS ANGELES COUNTY  
My Commission Expires November 17, 1974

### BOARD OF SUPERVISOR'S CERTIFICATE

ON MOTION OF SUPERVISOR Jackson, SECONDED BY SUPERVISOR Webb, IT IS ORDERED THAT MAP ENTITLED TRACT No. 3426 AS SHOWN BY PLATS OF SUBDIVISIONS, RECORDS OF THE BOARD OF SUPERVISORS, BE AND THE SAME ARE HEREBY APPROVED; THAT THE BOND OF PACIFIC AUTOMATION PRODUCTS INC., AS PRINCIPAL AND ARGONAUT INSURANCE COMPANY AS SURETIES IN THE SUM OF \$ 2,710.00 FOR THE PAYMENT OF TAXES AND SPECIAL ASSESSMENTS COLLECTED AS TAXES BE AND THE SAME IS HEREBY APPROVED; THAT THE SAID MAP ACCOMPANIED BY CERTIFICATE OF TITLE INSURANCE AND TRUST COMPANY SHOWING THAT TITLE TO SAID PROPERTY IS VESTED IN THE BANK OF CALIFORNIA NATIONAL ASSOCIATION, A NATIONAL BANKING ASSOCIATION AS TRUSTEE, AS OWNER IS RECORDED IN THE OFFICE OF THE COUNTY RECORDER; AND IT IS FURTHER ORDERED THAT THE SLOPE EASEMENT ADJACENT TO CHALET DRIVE AS SHOWN UPON SAID MAP AND THEREIN OFFERED FOR DEDICATION, BE AND THE SAME ARE HEREBY ACCEPTED FOR PUBLIC USE; ALSO THE OFFER OF DEDICATION OF CHALET DRIVE AS SHOWN UPON SAID MAP AND THEREIN OFFERED FOR DEDICATION BE AND THE SAME IS HEREBY REJECTED.

THE CLERK OF THIS BOARD IS DIRECTED TO ENDORSE UPON THE FACE OF SAID MAP A COPY OF THIS ORDER AUTHENTICATED BY THE BOARD OF SUPERVISORS. I HEREBY CERTIFY THAT THE FOREGOING ORDER WAS ADOPTED BY THE BOARD OF SUPERVISORS AT A MEETING HELD ON May 16th 1972

DATED: May 16th 1972

Vera K. Gibson  
COUNTY CLERK AND EX-OFFICIO OF THE BOARD OF SUPERVISORS OF THE COUNTY OF KERN, STATE OF CALIFORNIA.  
By: J. Castro  
Assistant County Clerk

### COUNTY SURVEYOR'S CERTIFICATE

I, L. DALE MILLS, HEREBY CERTIFY THAT I HAVE EXAMINED THIS MAP, THAT THE SUBDIVISION SHOWN THEREON IS SUBSTANTIALLY THE SAME AS IT APPEARED ON THE TENTATIVE MAP AND APPROVED ALTERATIONS THEREOF. THAT ALL PROVISIONS OF THE LAW HAVE BEEN COMPLIED WITH AND THAT TO THE BEST OF MY KNOWLEDGE AND BELIEF I AM SATISFIED THAT SAID MAP IS TECHNICALLY CORRECT.

DATED: May 11, 1972

L. Dale Mills  
COUNTY SURVEYOR

APPROVED BY THE KERN COUNTY PLANNING COMMISSION IN ACCORDANCE WITH THE REQUIREMENTS OF THE LAW IN DULY AUTHORIZED MEETING HELD ON JUNE 1, 1970

DATED: \_\_\_\_\_

Jack L. Dalton  
SECRETARY

### LEGEND

- FOUND MONUMENT AS NOTED
- SET 2" I.P. TAGGED "R.C.E. 16586", 12" DEEP
- 2" X 2" STAKES AT ALL CORNERS (TO BE SET)
- SET PERMANENT CONC. MONUMENT, 12" DEEP, EXCEPT AS NOTED
- Rad RADIAL BEARING
- E.T.E. EQUESTRIAN TRAIL EASEMENT
- S.E.L. SLOPE EASEMENT LINE
- L & T LEAD AND TACK
- FOUND 2" I.P. TAGGED "R.C.E. 16586 AS PER TRACT NO. 3427 M.B. 23 -13/35

ALL DISTANCES AND DIMENSIONS ARE SHOWN IN FEET AND DECIMALS THEREOF.

THE BLUE BORDER INDICATES THE BOUNDARIES OF THE LAND SUBDIVIDED BY THIS MAP.

### BASIS OF BEARINGS

THE BEARING N 0° 49' 42" W BEING THE WEST LINE OF SECTION 35, T 12 N, R 16 W, S. B. M., AS SHOWN ON MAP OF TRACT NO. 3424, RECORDED IN BOOK 19, PAGES 149 TO 162 INCLUSIVE, IN THE OFFICE OF THE COUNTY RECORDER, WAS TAKEN AS THE BASIS OF BEARINGS SHOWN ON THIS MAP.

SCALE: 1"=500'

# TRACT No. 3426

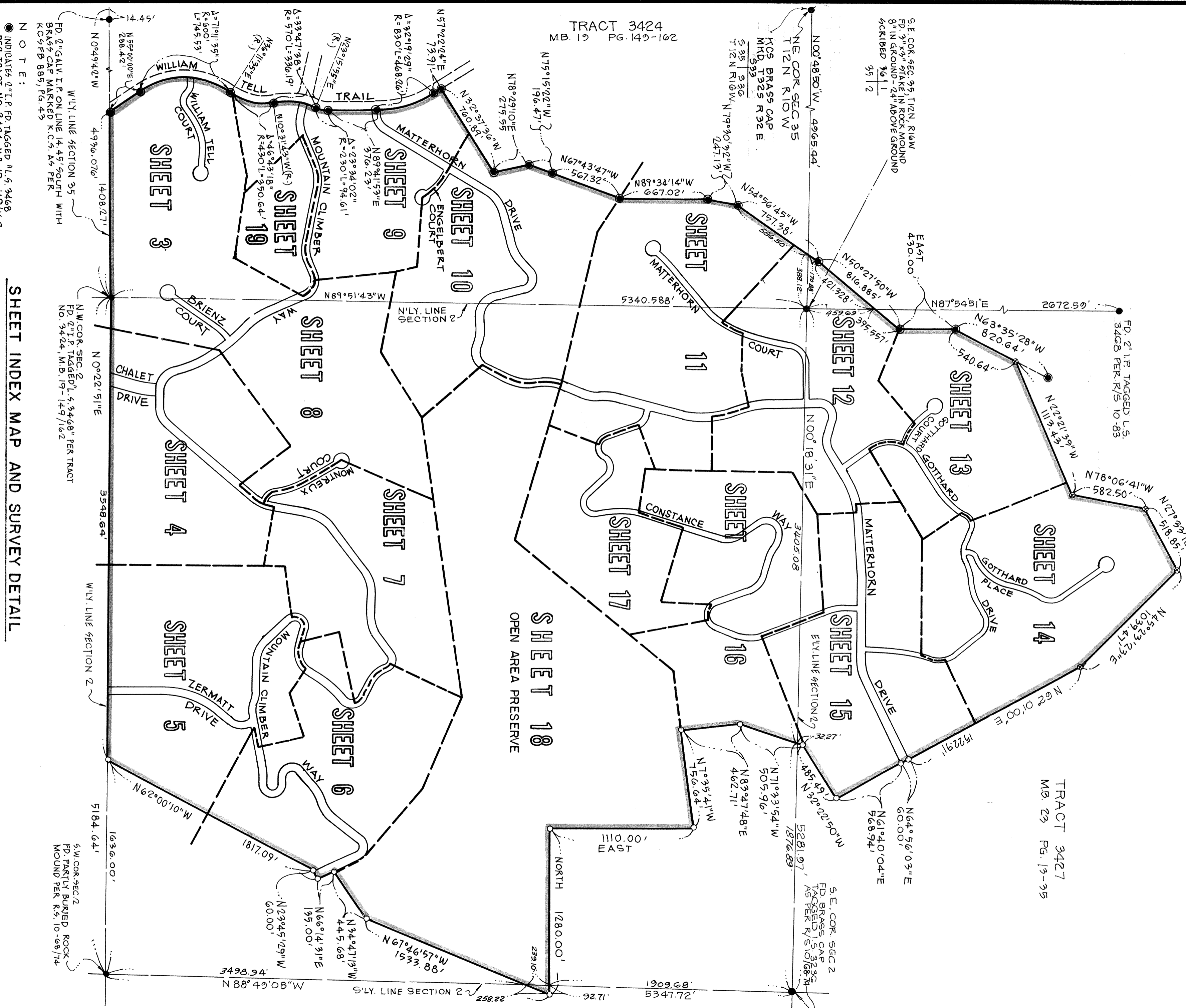
IN UNINCORPORATED TERRITORY OF KERN COUNTY  
STATE OF CALIFORNIA

Accepted for record and filed in Book 23  
of Maps, Page 146 in the Office of the County  
Recorder of the County of Kern, this 17<sup>th</sup> day  
of May 1922 at 8:00 a.m.

Ray A. Vercauteren  
County Recorder of the County of Kern  
by: *Frederic W. Sawyer*  
Ass't. Recorder

### LEGEND:

- FOUND MONUMENT AS NOTED
  - SET 2" I.P. TAGGED "R.C.E. 16586" 12" DEEP
  - 2"x2" STAKES AT ALL LOT CORNERS (TO BE SET)
  - SET PERMANENT CONC. MONUMENT, 12" DEEP, EXCEPT AS NOTED
  - (R) RADIAL BEARING
  - B, B.L. BUILDING SETBACK LINE
  - P.U.E. PUBLIC UTILITIES EASEMENT
  - L&T LEAD AND TACK TAGGED R.C.E. 16586
  - ⊗ Fd 2" I.P. Tagged R.C.E. 16586, Per Tract No. 3427 M.B. 19-149/162.
- ALL DISTANCES AND DIMENSIONS ARE SHOWN IN FEET AND DECIMALS THEREOF.
- THE BLUE BORDER INDICATES THE BOUNDARIES OF THE LAND SUBDIVIDED BY THIS MAP.



TRACT 3424  
M.B. 19 PG. 149-162

TRACT 3427  
M.B. 23 PG. 13-35

NOTES:

- INDICATES 2" I.P. FD. TAGGED "R.C.E. 3468" PER TRACT NO. 3424, M.B. 19-149/162
- W.L.Y. LINE SECTION 35
- B.R.A.S.S. CAP MARKED K.C.S. A5 PER K.C.S.F.B. 885, Pg. 43
- F.D. 2" I.P. TAGGED "R.C.E. 16586" PER TRACT NO. 3427, M.B. 19-149/162
- W.L.Y. LINE SECTION 2
- S.W. COR. SEC. 2, FD. PARTLY BURIED ROCK MOUND PER R.S. 10-68/74

SHEET INDEX MAP AND SURVEY DETAIL

SHEET 2 OF 19 SHEETS

SCALE: 1" = 100'

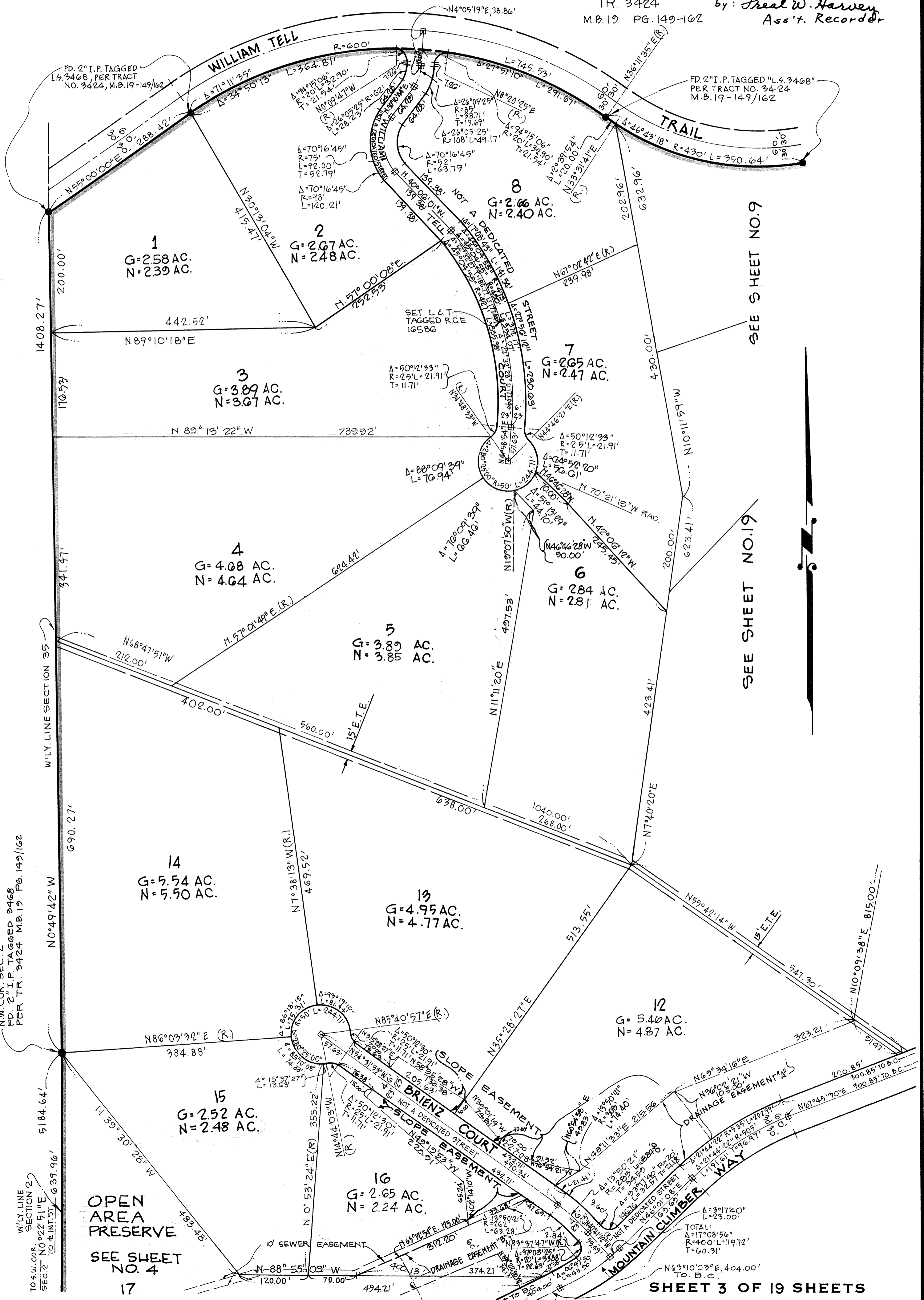
# TRACT No. 3426

IN UNINCORPORATED TERRITORY OF KERN COUNTY  
STATE OF CALIFORNIA

Accepted for record and filed in Book 23  
of Maps, Page 147 in the Office of the County  
Recorder of the County of Kern, this 17<sup>th</sup> day  
of May 1972 at 8:00 a.m.

Ray A. Verammen  
County Recorder of the County of Kern  
by: *Fred W. Harvey*  
Ass't. Recorder

TR. 3424  
M.B. 19 PG. 149-162



SEE SHEET NO.9

SEE SHEET NO.19

SEE SHEET NO. 4

SHEET 3 OF 19 SHEETS

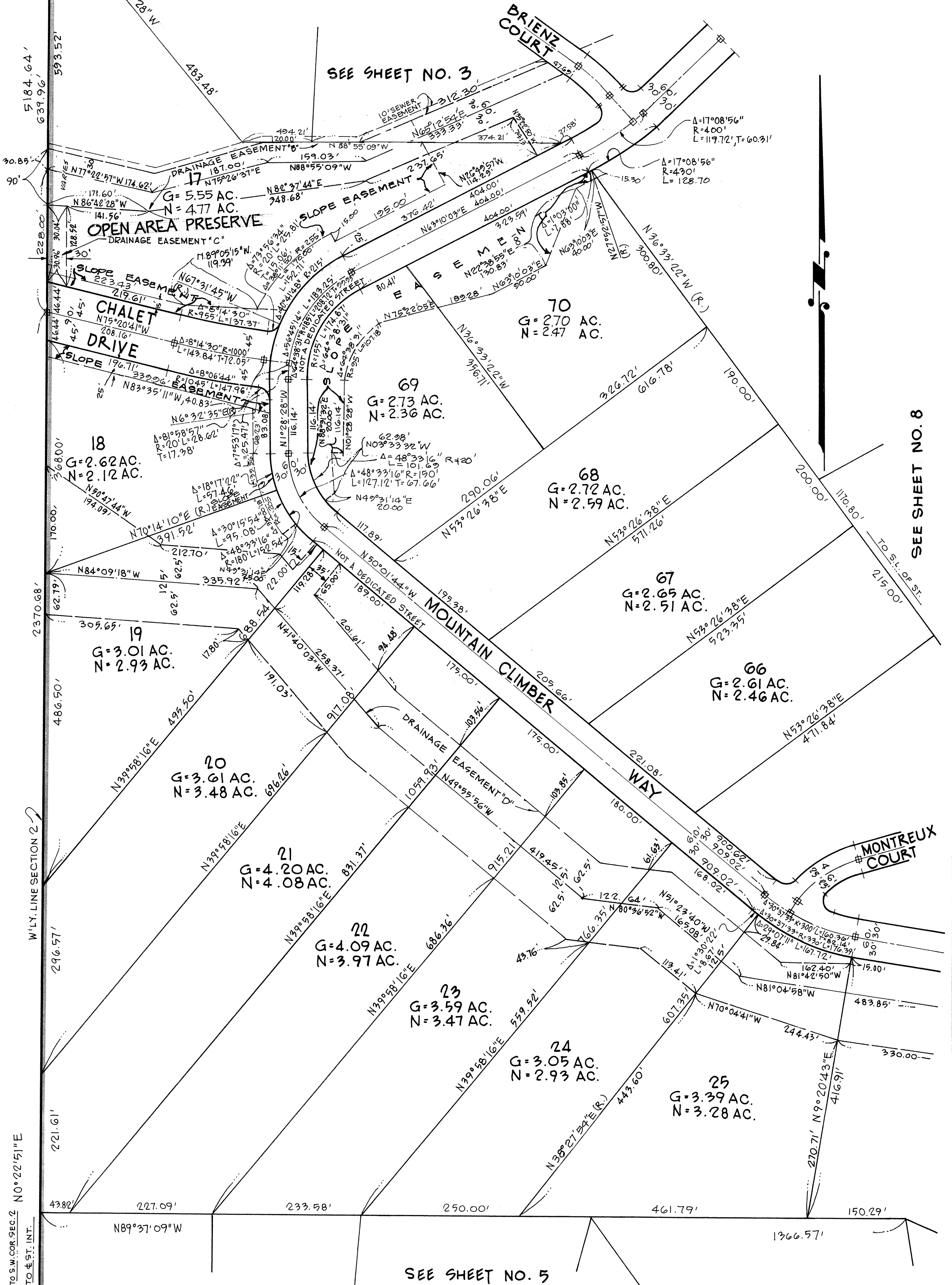
SCALE: 1" = 100'

# TRACT No. 3426

IN UNINCORPORATED TERRITORY OF KERN COUNTY  
STATE OF CALIFORNIA

Accepted for record and filed in Book 23  
of Maps, Page 148 in the Office of the County  
Recorder of the County of Kern, this 17<sup>th</sup> day  
of May 1972 at 8:00 a.m.

Ray A. Vercaemen  
County Recorder of the County of Kern  
by: *Freal W. Harvey*  
Ass't. Recorder



SEE SHEET NO. 8

SEE SHEET NO. 5

SCALE: 1" = 100'

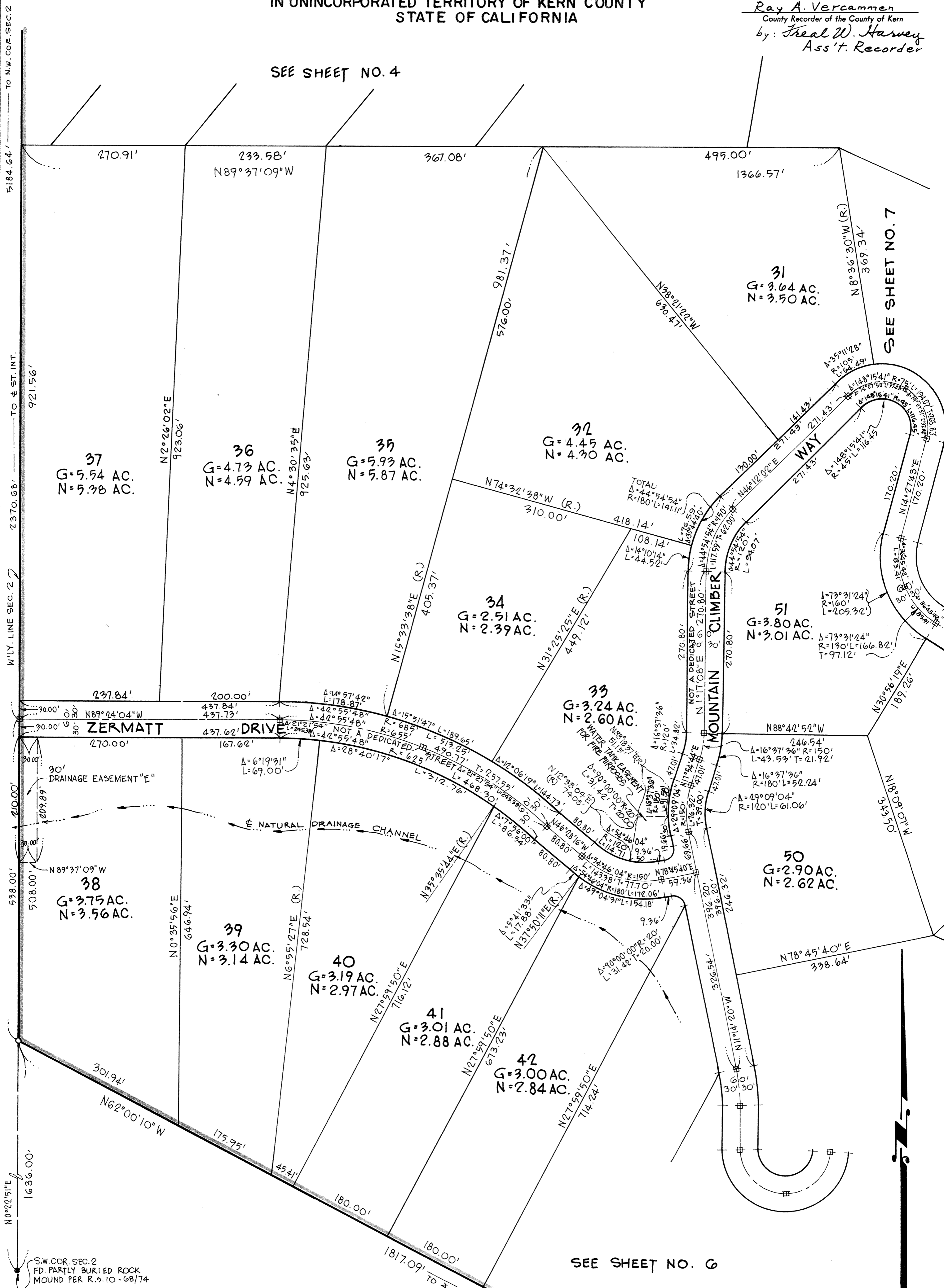
# TRACT No. 3426

IN UNINCORPORATED TERRITORY OF KERN COUNTY  
STATE OF CALIFORNIA

Accepted for record and filed in Book 23  
of Maps, Page 149 in the Office of the County  
Recorder of the County of Kern, this 17<sup>th</sup> day  
of May 1972 at 8:00 a.m.

Ray A. Vercaemen  
County Recorder of the County of Kern  
by: *Frederic W. Harvey*  
Ass't. Recorder

SEE SHEET NO. 4



SEE SHEET NO. 7

SEE SHEET NO. 6

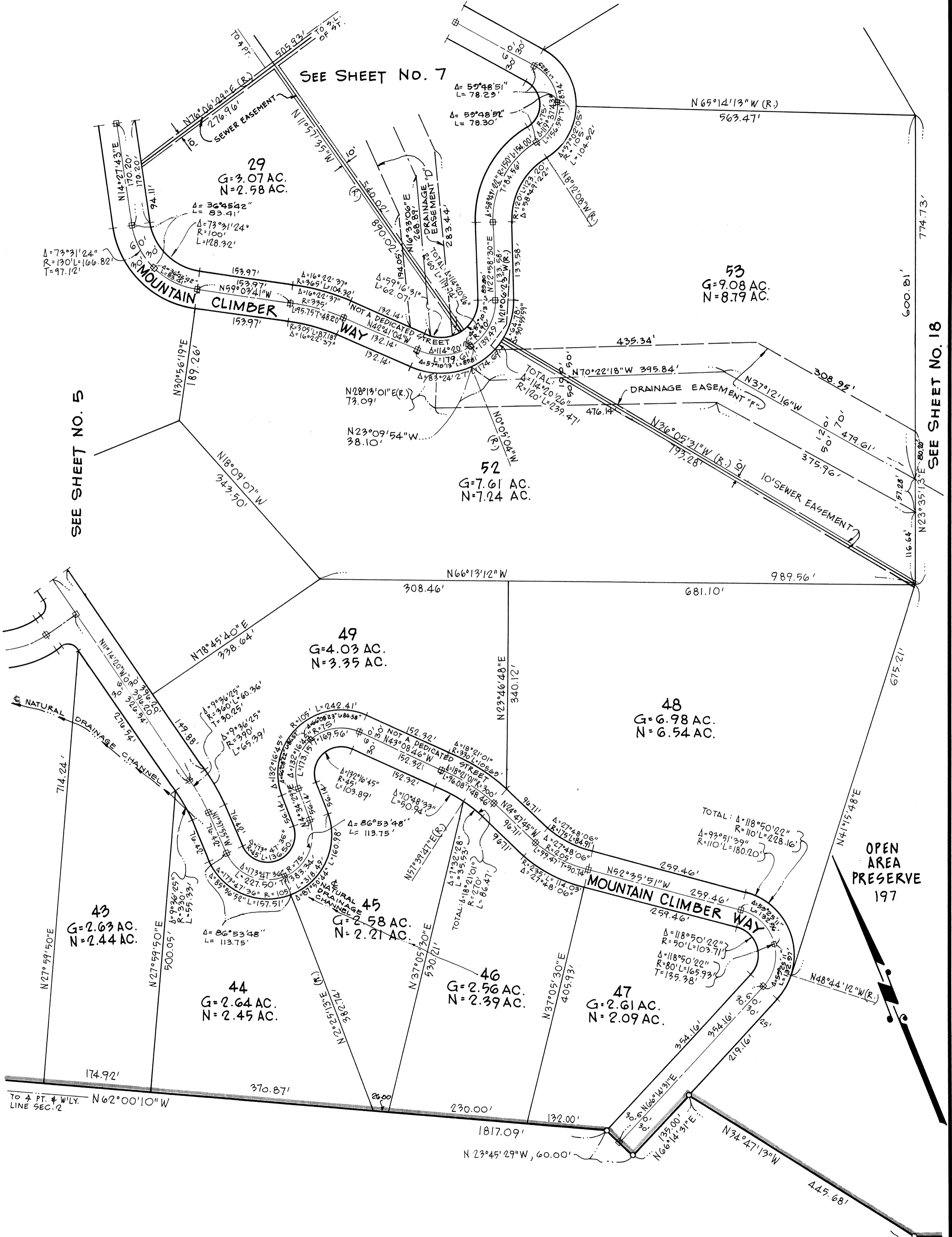
SCALE: 1" = 100'

# TRACT No. 3426

IN UNINCORPORATED TERRITORY OF KERN COUNTY  
STATE OF CALIFORNIA

Accepted for record and filed in Book 23  
of Maps, Page 150 in the Office of the County  
Recorder of the County of Kern, this 17<sup>th</sup> day  
of May 1972 at 8:00 a.m.

Ray A. Vercammen  
County Recorder of the County of Kern  
by: *Freal W. Harvey*  
Ass't. Recorder



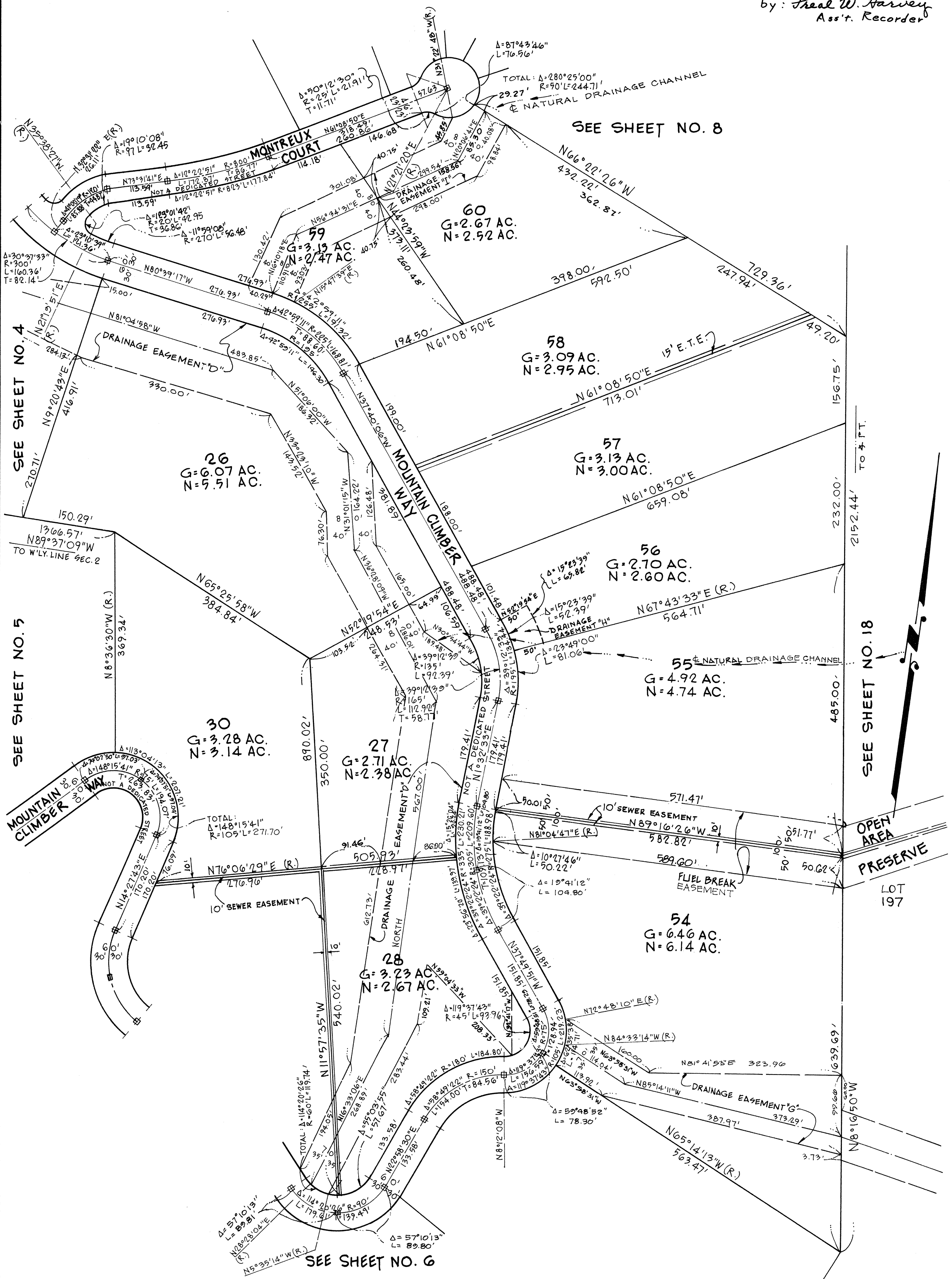
SCALE: 1"=100'

# TRACT No. 3426

IN UNINCORPORATED TERRITORY OF KERN COUNTY  
STATE OF CALIFORNIA

Accepted for record and filed in Book 23  
of Maps, Page 151 in the Office of the County  
Recorder of the County of Kern, this 17<sup>th</sup> day  
of May 1972 at 8<sup>00</sup> a.m.

Ray A. Vercaemen  
County Recorder of the County of Kern  
by: *Frederic W. Harvey*  
Ass't. Recorder



SEE SHEET NO. 4

SEE SHEET NO. 5

SEE SHEET NO. 8

SEE SHEET NO. 18

SEE SHEET NO. 6

SCALE: 1" = 100'

# TRACT No. 3426

IN UNINCORPORATED TERRITORY OF KERN COUNTY  
STATE OF CALIFORNIA

Accepted for record and filed in Book 23  
of Maps, Page 152 in the Office of the County  
Recorder of the County of Kern, this 17<sup>th</sup> day  
of May 1972 at 8:00 a.m.

Ray A. Vercaemen  
County Recorder of the County of Kern  
by: *Freal W. Harvey*  
Ass't. Recorder

SEE SHEET NO. 19

SEE SHEET NO. 9

SEE SHEET NO. 3

BRIENZ COURT

SLOPE EASEMENT

N 27° 52' 15" W (R.)

N 27° 52' 15" W (R.)

N 27° 52' 15" W (R.)

N 27° 52' 15" W (R.)

N 27° 52' 15" W (R.)

N 27° 52' 15" W (R.)

N 27° 52' 15" W (R.)

N 27° 52' 15" W (R.)

N 27° 52' 15" W (R.)

N 27° 52' 15" W (R.)

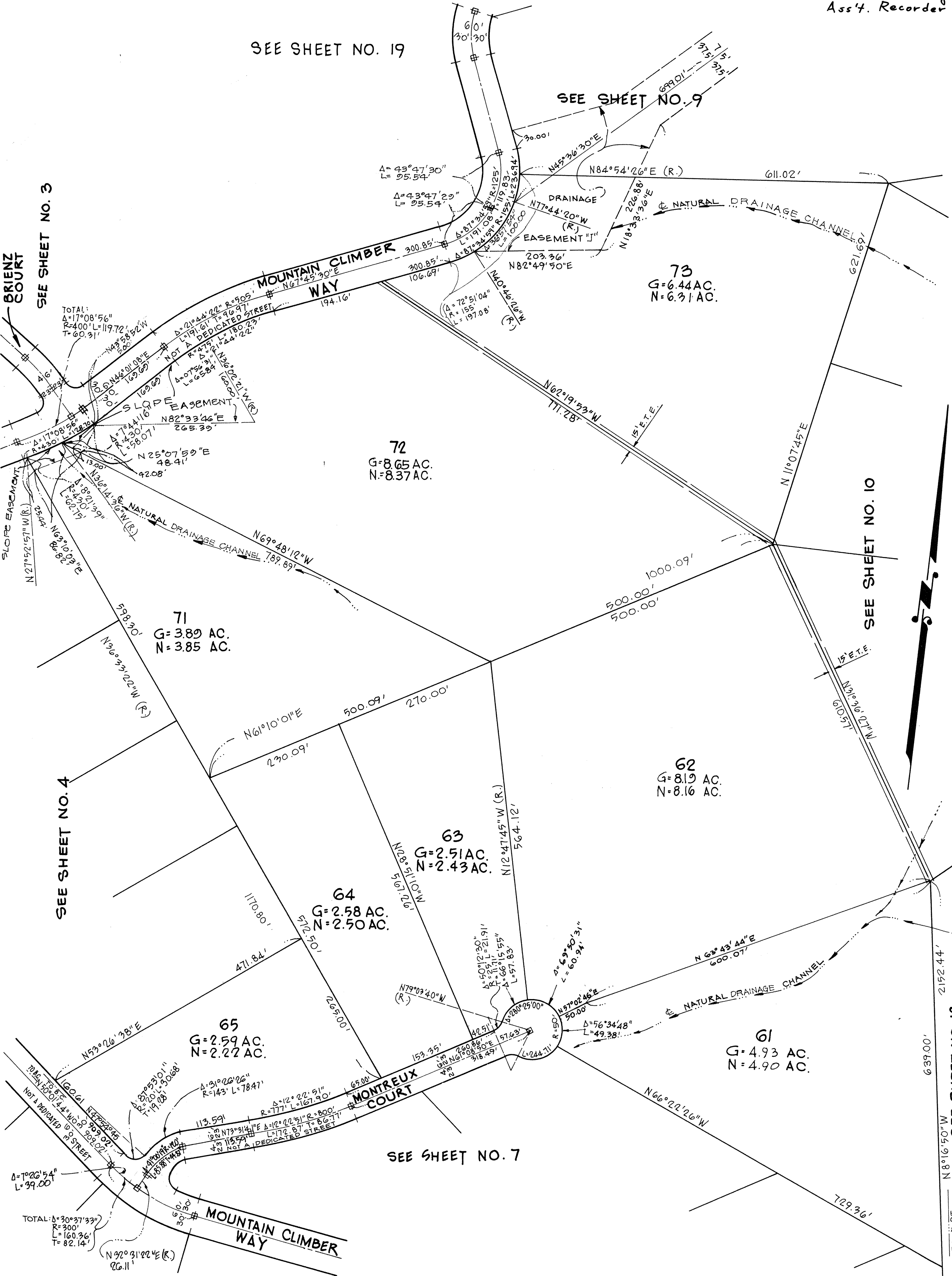
SEE SHEET NO. 3

SEE SHEET NO. 4

SEE SHEET NO. 10

SEE SHEET NO. 18

TO 4 FT.



SEE SHEET NO. 7



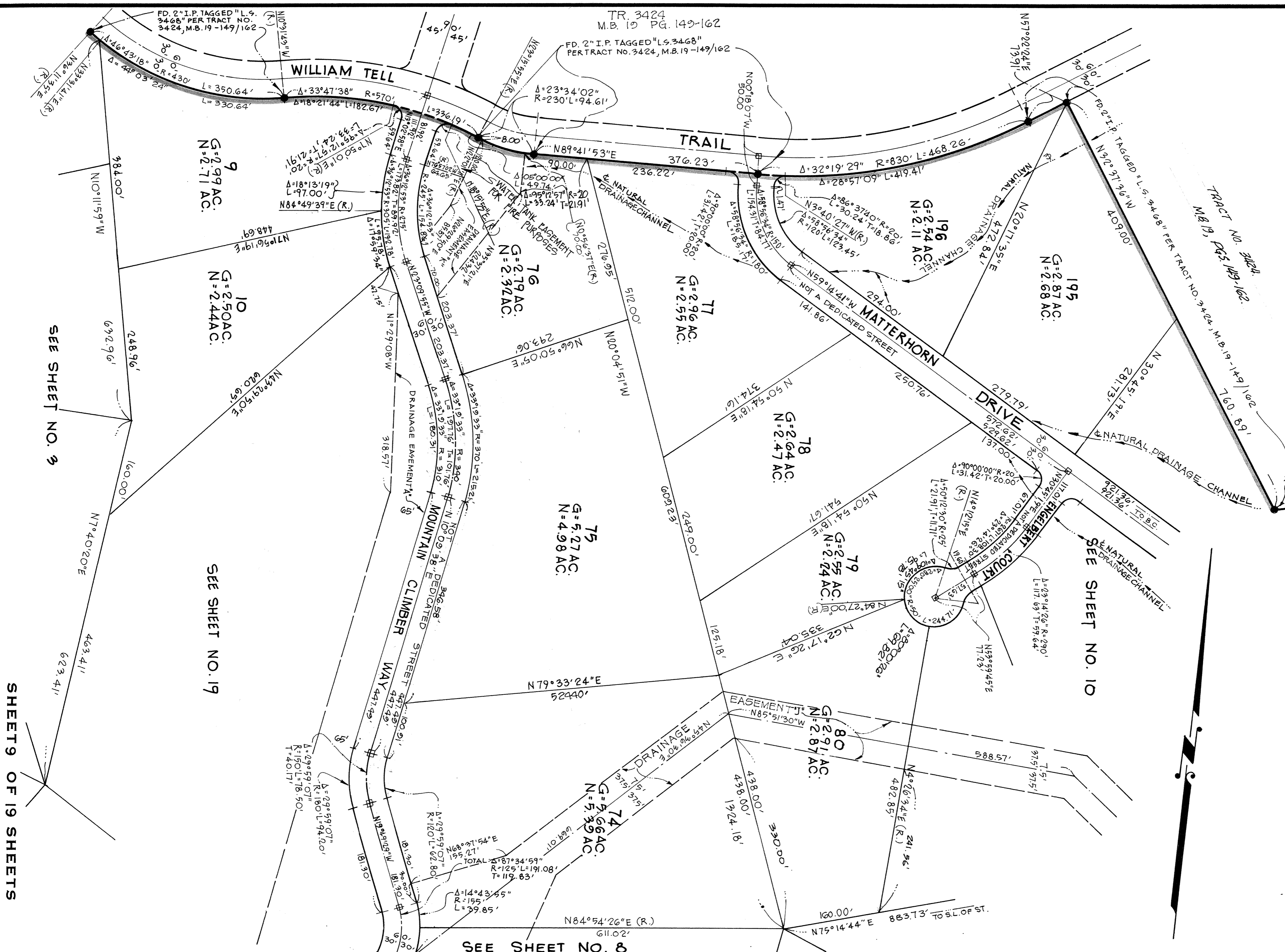
SCALE: 1"=100'

# TRACT NO. 3426

IN UNINCORPORATED TERRITORY OF KERN COUNTY  
STATE OF CALIFORNIA

Accepted for record and filed in Book 23  
of Maps, Page 153 in the Office of the County  
Recorder of the County of Kern, this 17<sup>th</sup> day  
of May 1972 at 8:00 a.m.

Ray A. Vercammer  
County Recorder of the County of Kern  
by: *Frank W. Harvey*  
Ass't. Recorder



SEE SHEET NO. 3

SEE SHEET NO. 19

SEE SHEET NO. 8

SEE SHEET NO. 10

SHEET 9 OF 19 SHEETS

SCALE: 1"=100'

# TRACT No. 3426

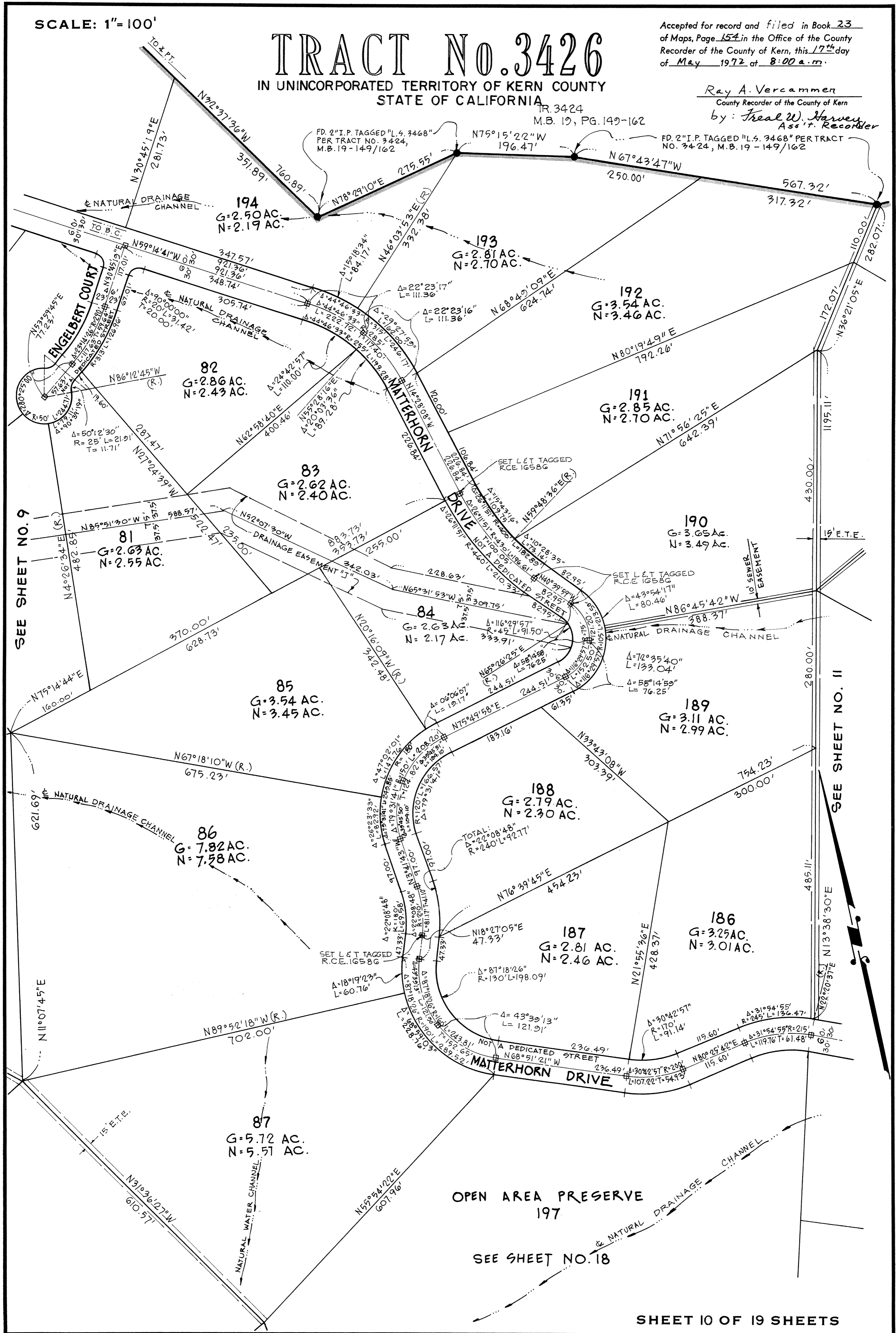
IN UNINCORPORATED TERRITORY OF KERN COUNTY  
STATE OF CALIFORNIA

Accepted for record and filed in Book 23  
of Maps, Page 154 in the Office of the County  
Recorder of the County of Kern, this 17<sup>th</sup> day  
of May 1972 at 8:00 a.m.

Ray A. Vercammen  
County Recorder of the County of Kern  
by: *Frederic W. Harvey*  
Ass't. Recorder

TR. 3424  
M.B. 19, PG. 149-162

FD. 2" I.P. TAGGED "L.S. 3468"  
PER TRACT NO. 3424,  
M.B. 19-149/162



OPEN AREA PRESERVE  
197

SEE SHEET NO. 18

SCALE: 1" = 100'

# TRACT No. 3426

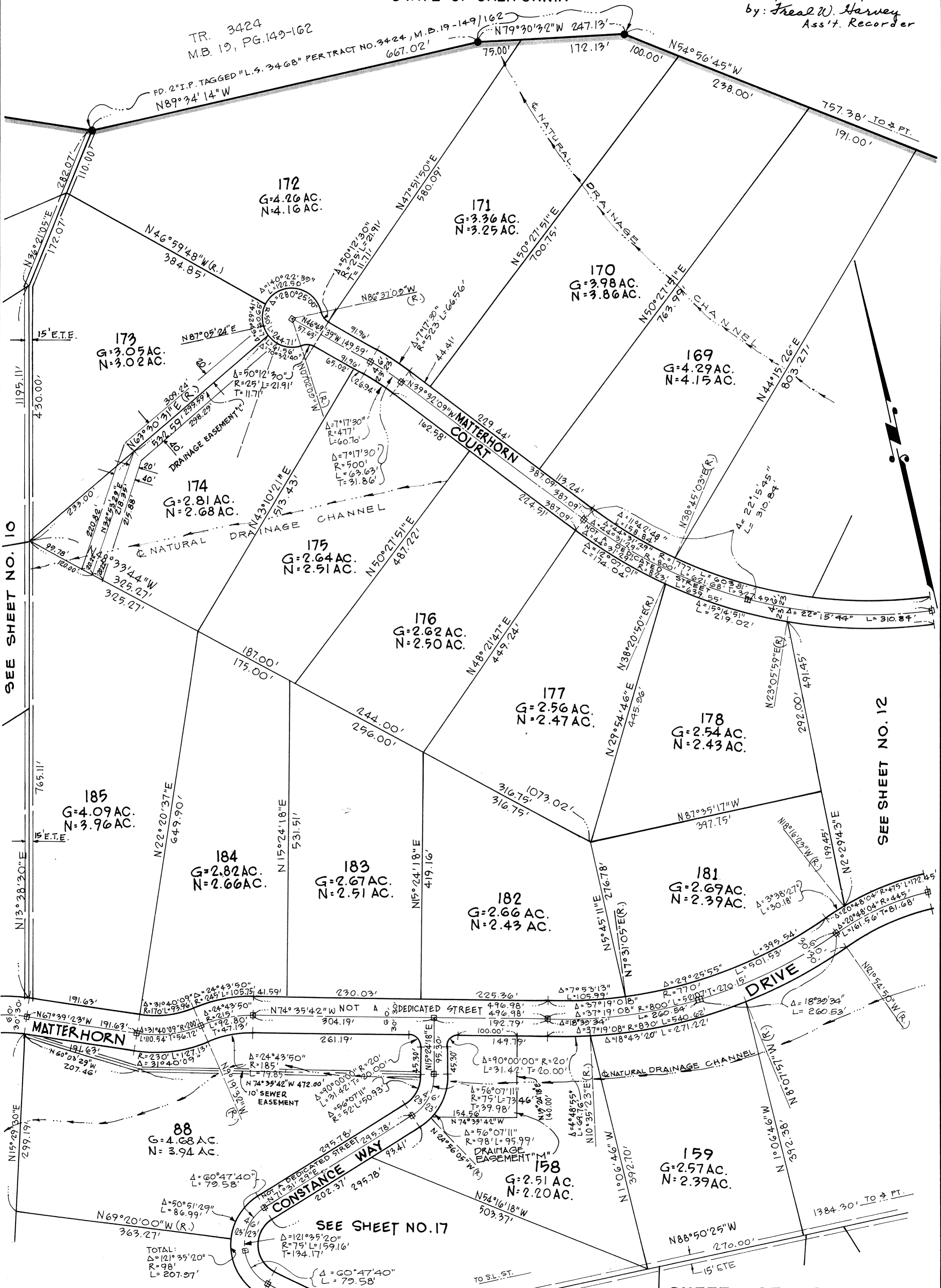
IN UNINCORPORATED TERRITORY OF KERN COUNTY  
STATE OF CALIFORNIA

Accepted for record and filed in Book 23  
of Maps, Page 155 in the Office of the County  
Recorder of the County of Kern, this 17<sup>th</sup> day  
of May 1972 at 8:00 a.m.

Ray A. Vercammen  
County Recorder of the County of Kern  
by: *Fred W. Harvey*  
Ass't. Recorder

TR. 3424  
M.B. 19, PG. 149-162

FD. 2" I.P. TAGGED "L.S. 3468" PER TRACT NO. 3424, M.B. 19-149/162  
N79°30'32"W 247.13'  
667.02' 75.00' 172.13' 100.00' N54°56'45"W 238.00'



SEE SHEET NO. 10

SEE SHEET NO. 12

SEE SHEET NO. 17

SHEET 11 OF 19 SHEETS